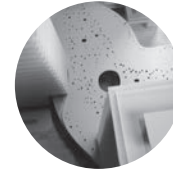




## MIXED USE / LARGE PROJECTS



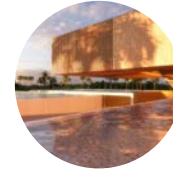
### RIVER GALLERY

Krasnodar - Russia



### KAEC BUSINESS DISTRICT

KAEC - KSA



### DAKAR GOLF CLUB

Dakar - Senegal



### THE ICONIC MOSQUE

Dubai - EAU



### COLLIDER ACTIVITY C.

Sofia - Bulgaria



### LIGHTHOUSE 600

KSA



### ONE-NINETY

Egypt- Cairo



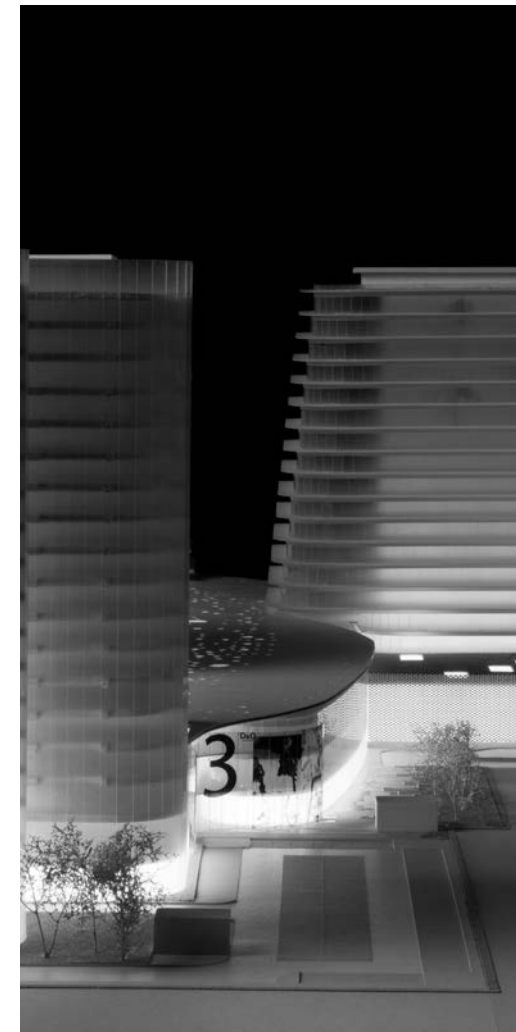
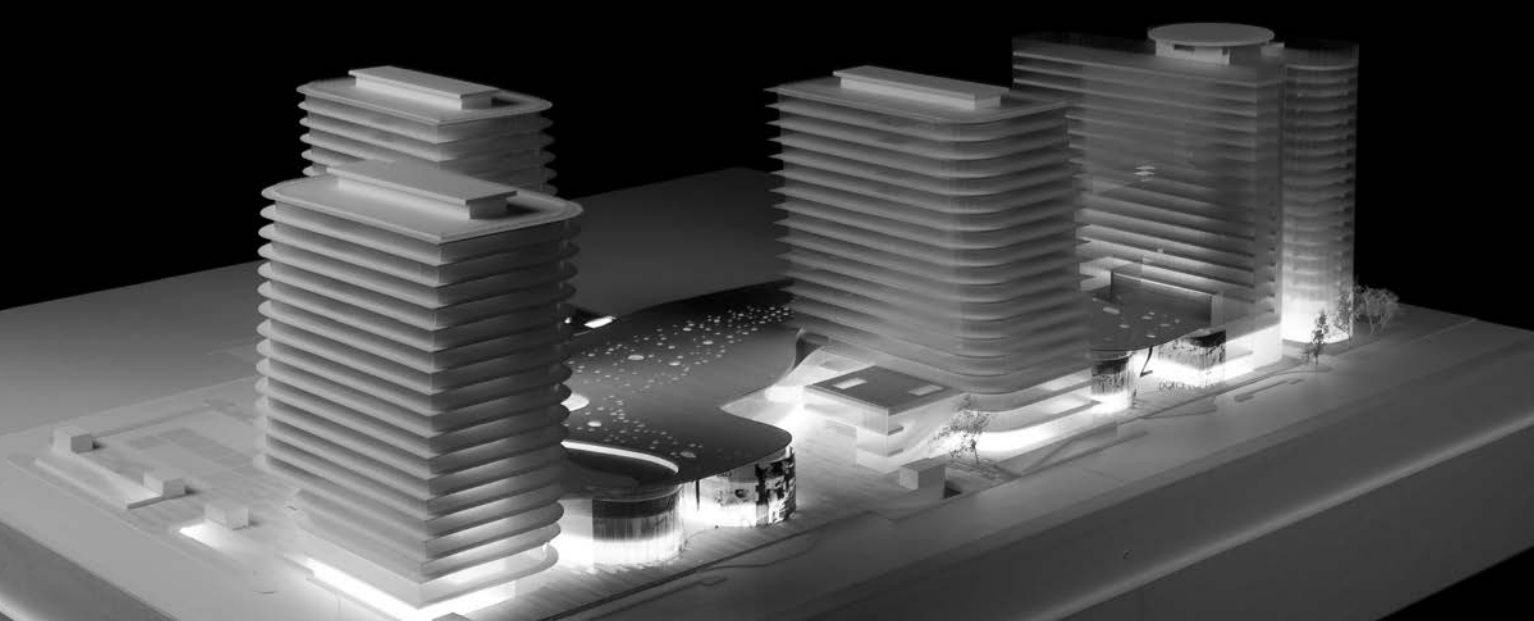
### SPERO

Siracusa - Italy



### FASHION PALACE

Moscow - Russia



## RIVER GALLERY

Russian Federation - Krasnodar

Hotel / Directional towers / Mall

*Design team leader role*

*Project for the construction of an urban block with three directional towers, a hotel and a shopping gallery.*

*The formal elements that denote the project are basically summarized in two: an almost modular grid that takes up the theme of the plot well present in the territory and the theme of water, the river that crosses the plot creating formal and functional interactions with it.*

*A randomized coverage was specifically designed for the commercial area in order to filter the daylight and create different light intensities inside. the river that crosses the plot creating formal and functional interactions with it.*



## KAEC BUSINESS DISTRICT

King Abdullah Economic City - KSA

Business district urban development

*Design team leader role*





## DAKAR GOLF CLUB

Dakar - Senegal

Golf club house / Congress center / Spa

*Design team leader role*

*The Dakar Golf Club House is located near the Atlantic Ocean, on the coast of Dakar.*

*The intervention, very complex from the functional point of view, is entirely focused on the landscape aspects and reveals a continuous dialogue with the environment from which it is surrounded.*





EMAAR - THE ICONIC MOSQUE

Dubai - EAU

New mosque design / Landscape  
Design team leader role

Emaar Development has hosted an International open design competition for the design of the Iconic Mosque at the heart of the ambitious new world-class mixed-use waterfront development Dubai Creek Harbour.

The Development is a 5.6 Million sqm site and is expected to have 48,500 residential units with a population of 175,000 residents, when completed.







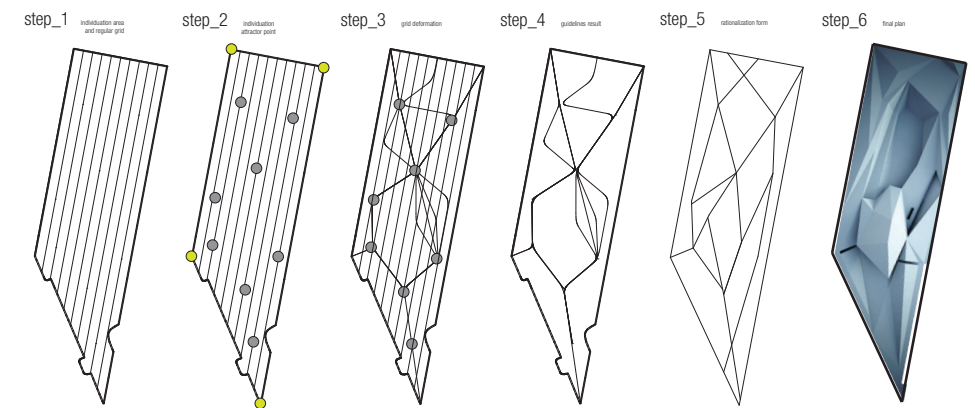
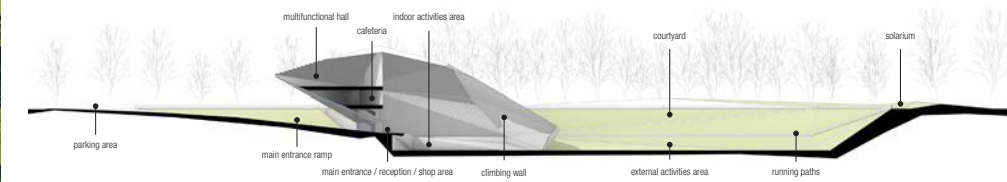
## COLLIDER ACTIVITY CENTER

Sofia - Bulgaria

Collider company headquarters / Fitness spaces / Pool / Restaurant

*Design team leader role*

*Walltopia Ltd, a leading manufacturer of equipment and spaces dedicated to free climbing, organize a competition for the creation of the Collider Activity Center. Our concept in this regard involved the creation of a continuous and parametric element through which the various functional areas and the distribution of the volumetric masses in the lot were located.*







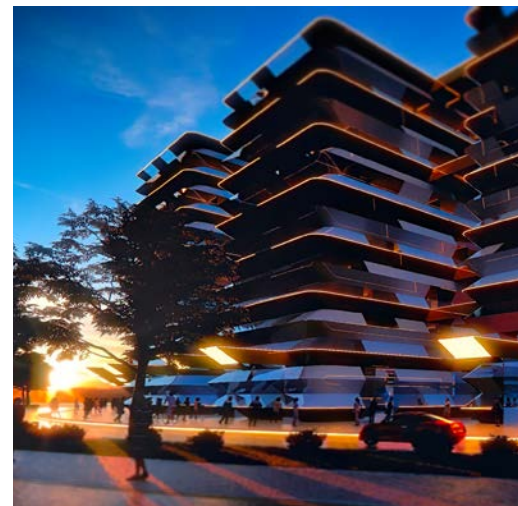
## LIGHTHOUSE 600

KSA

Tower / mixed use / hotel / apartments / commercial  
*Design team leader role*







## ONE-NINETY

EGYPT - CAIRO

Business district buildings façade design  
*Design team leader role*





## SPERO

Siracusa - Italy

Marina / Mixed use / Commercial / Hotel

*Design team leader role*

*Located within the coastal industrial area called "Spero" near the historic city of Syracuse, the project involves the construction of a commercial area on the ground floor and a volume of residences above it. The marina will be rebuilt with the redefinition of the waterfront according to a modern perspective of tourist and receptive use.*





## FASHION PALACE IN THE RED SQUARE

Russian Federation - Moscow

Headquarters / Restaurant / Exhibition spaces

*Design team leader role*



## RESIDENTIAL / HOSPITALITY



### MISRATAH RESORT

Libya - Misratah



### THE FLOATING VENICE

Dubai - EAU



### PARENZO RESORT

Croatia - Porec



### SENIOR CITY

Italy - Cortina d'Ampezzo



### CERVARA HOUSING

Italy - Treviso



### AG RESIDENCE

Agrigento - Italy



### AB BUILDING

Senegal - Dakar



### BR HOTEL

Russian Federation - Krasnodar



### A - HOTEL

Teheran - IRAN



MISRATAH RESORT

Libya - Misratah

Residential complex with mosque and retail spaces  
Design team leader role

On the coast west of the city of Misratah, along a stretch of large sand dunes, the M Resort brings together innovative architecture and design solutions that are radically inspired by Arabic traditions. The client's guidelines were to design a resort complex in which all the apartments would face the sea and boast a contemporary functionality, fitted with state-of-the-art technologies and equipped with common areas and services such as a shop and a purpose-built mosque.





## THE FLOATING VENICE

Dubai - EAU

Luxury resort

Design architect role

*The Heart of Europe is an exclusive European style hospitality resort located 4 km from the coast of Dubai that provides an authentic European experience in the Middle East. Inside is "The floating Venice", a modern interpretation of the sumptuousness and magnificence of Venice, rebuilt as a magical place surrounded by water and revived in its most profound atmospheres and suggestions.*





## PARENZO RESORT

Croatia - Porec

Seaside apartments

*Design team leader role*







## SENIOR CITY

Italy - Cortina d'Ampezzo

Apartments and collective spaces for elderly people

*Design team leader role*

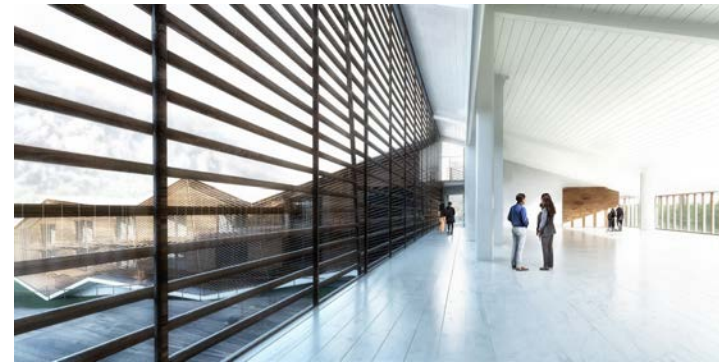
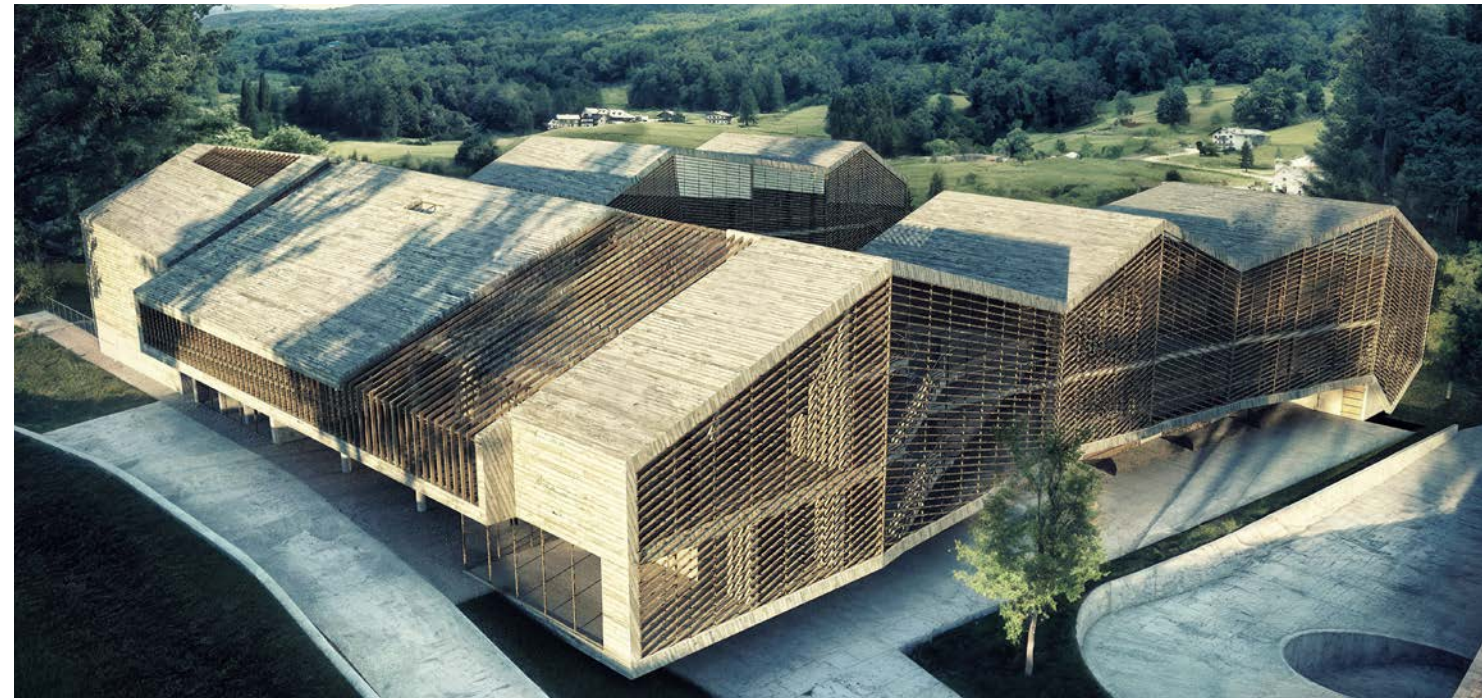
*The project idea starts from a reflection on what can be a small-scale reconfiguration of an Alpine city: A city capable not only of accommodating possible environmental transformations such as those that occurred at the time and after the tourist boom, but above all capable of representing a fundamental reference model for the*

*interaction of small and rhapsodic transformations of the territory.*

*It is therefore a working hypothesis that aims to investigate the characteristics of a new form of micro-city, which will be expressed as a complete organism, endowed with the complexity that has characterized the historic city, but characterized by its expansion at the landscape scale. The predominant theme was therefore the landscape and the mountain as a prevailing and discriminating element in the positioning choices of the volumes, and therefore of the functional and technological aspects.*

*This intent was pursued along two main lines of work: one relating to the adaptation of the building to the orography and the other relating to the materials and their use.*

*In the face of these architectural choices we have tried to reinterpret the reasons of traditional language, extracting the essence of the construction rules, the tectonic reasons for the use of materials, structures and masonry, the climatic logics of orientations, openings and coverings and experiencing an architecture that is both new and rooted in tradition.*





## CERVARA HOUSING

Italy - Treviso

Residential complex / Landscape

Design team leader role

*"Man is halfway between nature and society: if he decides in favor of the latter, his relationship with nature becomes somewhat tense; if his choice is in favor of nature, a certain tension is established between him and society".*

*So Adolf Behne said in the last century to describe the delicate balance in which architecture arises as a balance needle and serves as an introduction to the description of the approach and spirit with which the project theme was solved.*

*The starting point was the inevitable demolition of the existing industrial building, a body foreign to the environment with which it related and that leaves us only the trace on the campaign plan of the regulatory constraints with which our new building will also have to comply ( minimum distances etc.).*

*The lot, finally free, reveals the landscape background of the Sile river and its park, the true protagonist of the narration and with which to set up a dialogue in the definition of a formal and material / substantial balance. Thus the need arises to open the lot by inserting a third central corridor, increasing the visual permeability with respect to the street front and distributing the dwellings on two almost symmetrical blocks.*

*The central horizontal void becomes the center of gravity of the distribution scheme of collective routes. Inside, the main entrances to the two blocks' dwellings are obtained through two pedestrian ramps that exceed the height difference (required by legislation) compared to the ground level.*







## AG RESIDENCE

Agrigento - Italy

Residential / Commercial

*Design team leader role*



## AB BUILDING

Senegal - Dakar

Mixed use / Directional / Residential / Medical Center

*Design team leader role*

*Project for the construction of a mixed-use building. On the ground floor and in the basement it is planned an area for public services. The other five levels are for directional use. The top levels are intended for apartments.*

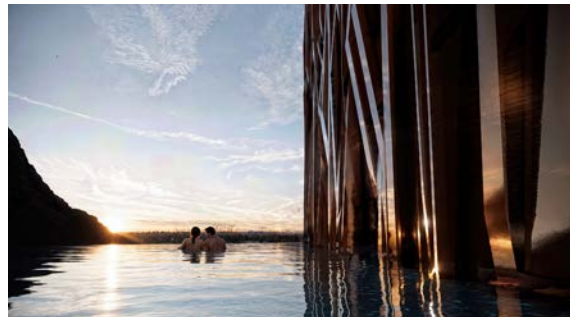


## BR HOTEL

Russian Federation - Krasnodar

Hotel / Spa

*Design team leader role*



## A - HOTEL

Teheran - IRAN

Hotel façade design

*Design team leader role*

*This iconic hotel stands on the confluence of two high and steep hills. It is bordered on one side by the course of the river and on the other by an important state road. The project consists in the construction of a skin outside the main concrete structure.*



## PUBLIC / COLLECTIVE SPACES



### EL-BERKA KASIR

Lybia - Bengazi



### ARCHAEOLOGICAL MUSEUM

Libya - Tripoli



### DOHA HEADQUARTERS

Libya - Tripoli



### HEREFORD BUTTERMARKET

United Kingdom - Hereford



### MDP SCHOOL

Treviso - Italy



### DE RENZIO SCHOOL

Bari - Italy



### ASCOPIAVE HQ

Treviso - Italy



### PIAZZA CASTELLO

Oderzo - ITALY



### PIAZZA FERMI

Venice - Italy



## EL-BERKA KASIR

Lybia - Bengazi

Restoration and restyling of a former barracks and conversion into a museum, conference center and hotel.  
*Design team leader role*

*The many different rulers who have governed the city over the course of its history have bequeathed to Benghazi an enormous variety of architectural styles that reflect the diverse cultures that have predominated.  
Arab, Ottoman and Italian influences have left their mark on the city's development, its streets and its buildings.  
It is in this evocative multicultural and multi-stylistic context that the restyling and refunctionalization project for the building known as El-Berka Kasir took shape.*





## ARCHAEOLOGICAL MUSEUM OF LIBYA

Libya - Tripoli

Red Castle - Restoration and restyling of Libya's  
archaeological museum

*Design team leader role*





**DOHA HEADQUARTERS**

Libya - Tripoli

New Department of Archaeology headquarters and underground exhibition spaces

*Design team leader role*

*To complete the landscape project of the southern garden of the historic home of Villa Volpi it is planned to create an underground path that connects the villa and the permanent exhibition with the DOHA headquarters. The path also serves as a temporary exhibition hall for modern art.*



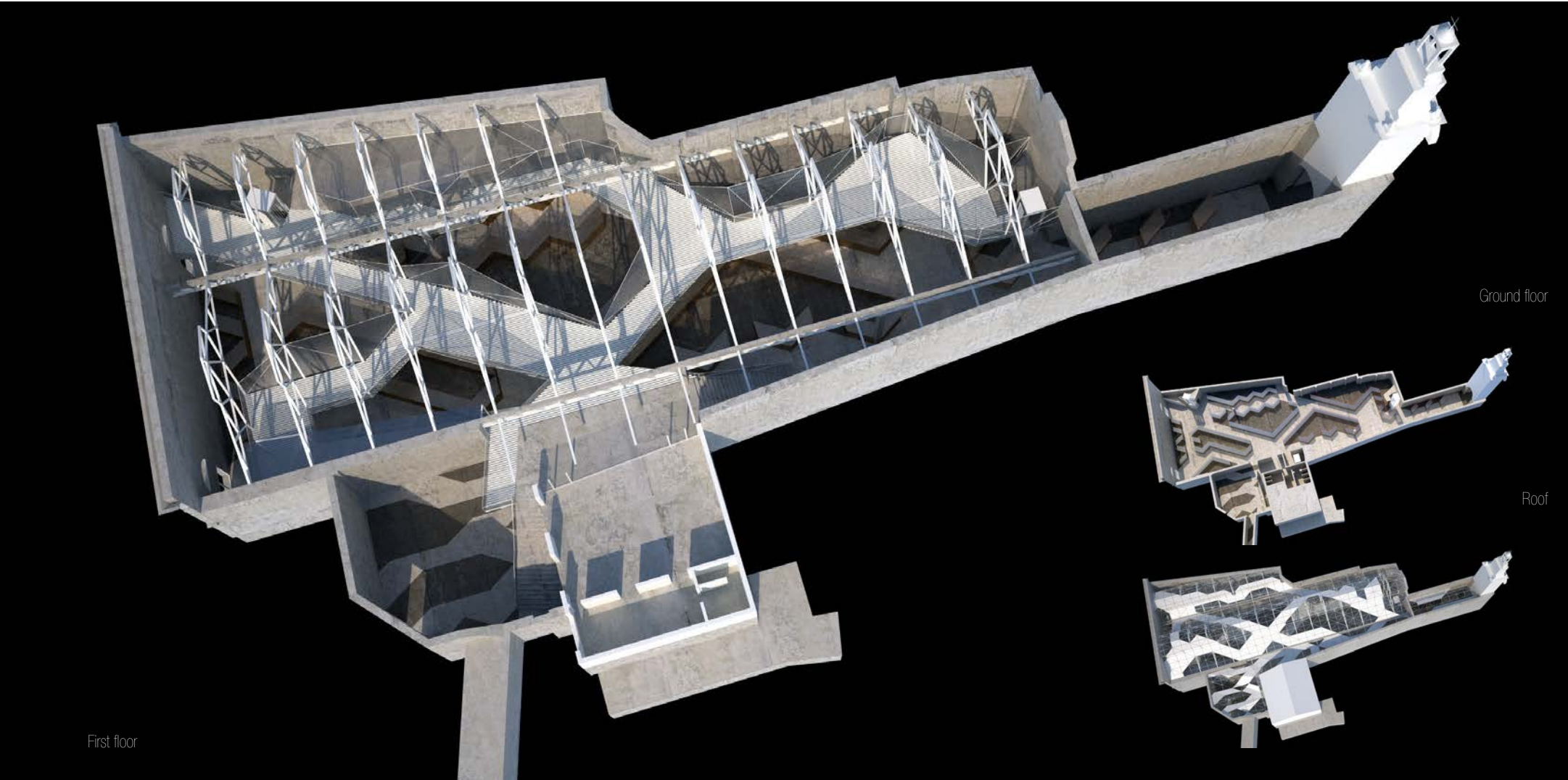
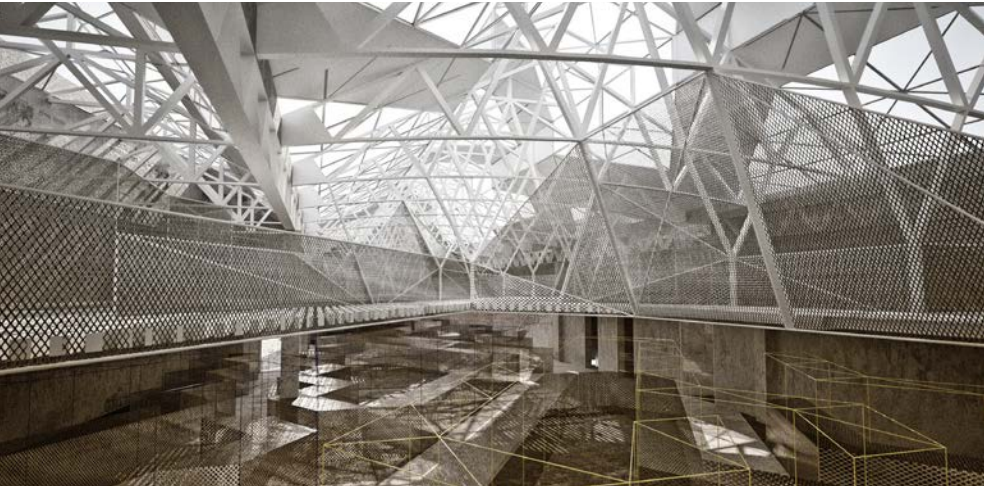


**HEREFORD BUTTERMILK**

United Kingdom - Hereford

Restoration / Mixed use / Commercial spaces / Restaurant / Exhibition spaces

Design team leader role





MDP SECONDARY SCHOOL  
Treviso - Italy

Building addition of an existent school complex  
Design team leader role



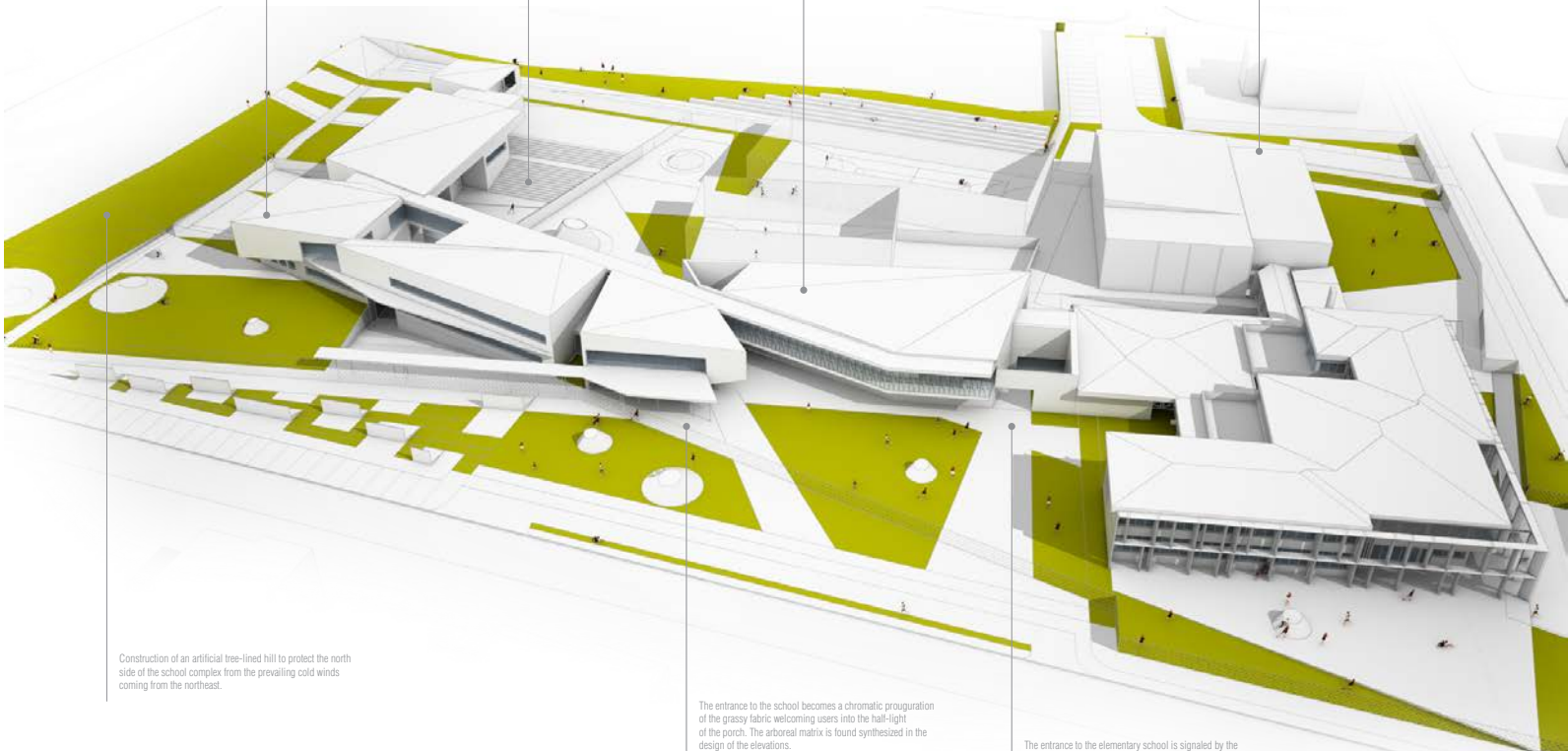
Ground floor

The roofs will house a system of photovoltaic panels that will ensure the complete energy autonomy of the entire school complex.

The underground structure (auditorium) of the stairway becomes a place sheltered from the winds and in contact with the vegetation contours of the urban park, realizing an extension of the educational boundaries outside.

The new gymnasium will be equipped with solar panels for autonomous domestic hot water production.

The new gymnasium will be equipped with solar panels for autonomous domestic hot water production.



Construction of an artificial tree-lined hill to protect the north side of the school complex from the prevailing cold winds coming from the northeast.

The entrance to the school becomes a chromatic prougaration of the grassy fabric welcoming users into the half-light of the porch. The arboreal matrix is found synthesized in the design of the elevations.

The entrance to the elementary school is signaled by the



## DE RENZIO PRIMARY SCHOOL

Bari - Italy

New scholastic complex

*Design team leader role*



## ASCOPIAVE HEADQUARTERS

Treviso - Italy

Directional spaces interior design

*Design team leader role*





## ISLAMIC MUSEUM

Libya - Tripoli

New ticket office and cafeteria / Relandscaping

*Design team leader role*





## PIAZZA CASTELLO

Oderzo - ITALY

Urban development / square redesign

*Design team leader role*

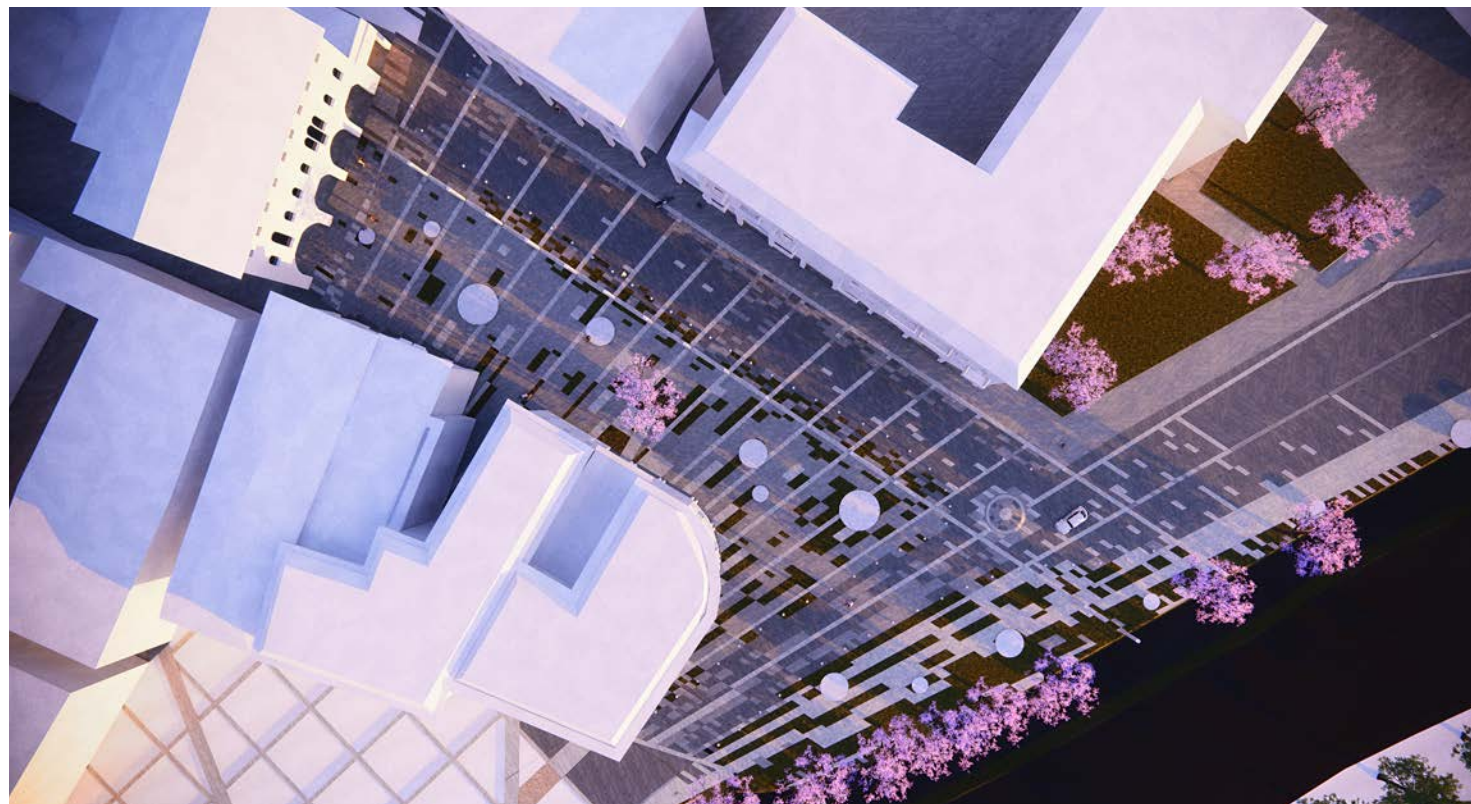


## PIAZZA FERMI

Venice - Italy

Urban development / square redesign / housing

*Design team leader role*





## PRIVATE HOUSES



### MEDINA HOUSE

Tunisia - Tunis



### ALTH HOUSE

Saudi Arabia - Ryhad



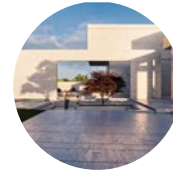
### OLIVE TREES HOUSE

Libya - Yefren



### CMD - VILLA

Palermo - Italy



### FAWA HOUSE

Saudi Arabia - Ryhad



### FSC - VILLA

Palermo - Italy



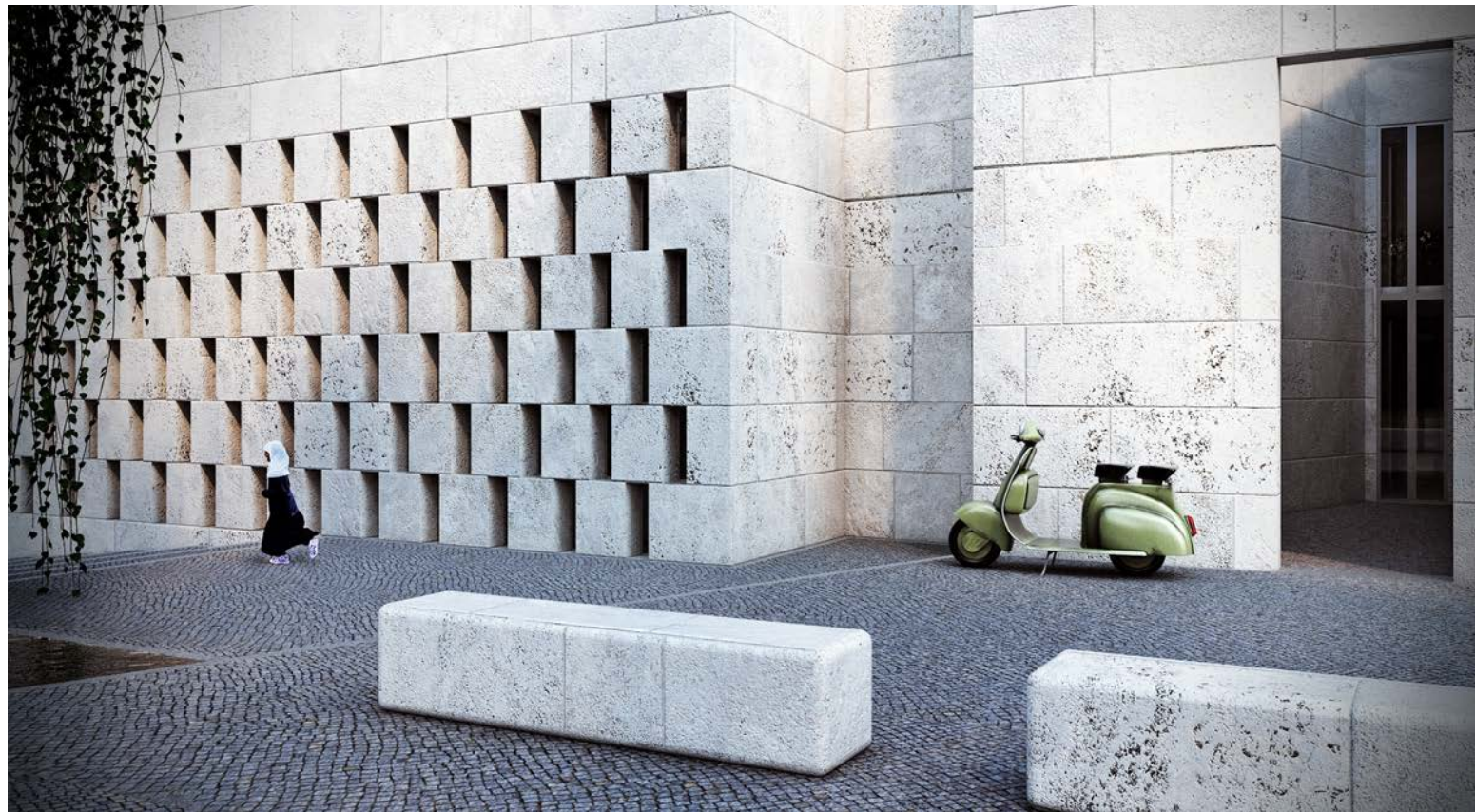


## MEDINA HOUSE

Tunisia - Tunis

Private villa

*Design team leader role*







## ALTH HOUSE

Saudi Arabia - Ryhad

Private villa

*Design team leader role*





## OLIVE TREES HOUSE

Libya - Yefren

Private villa

*Design team leader role*







## **CMD - VILLA**

Palermo - Italy

Private villa

*Design team leader role*

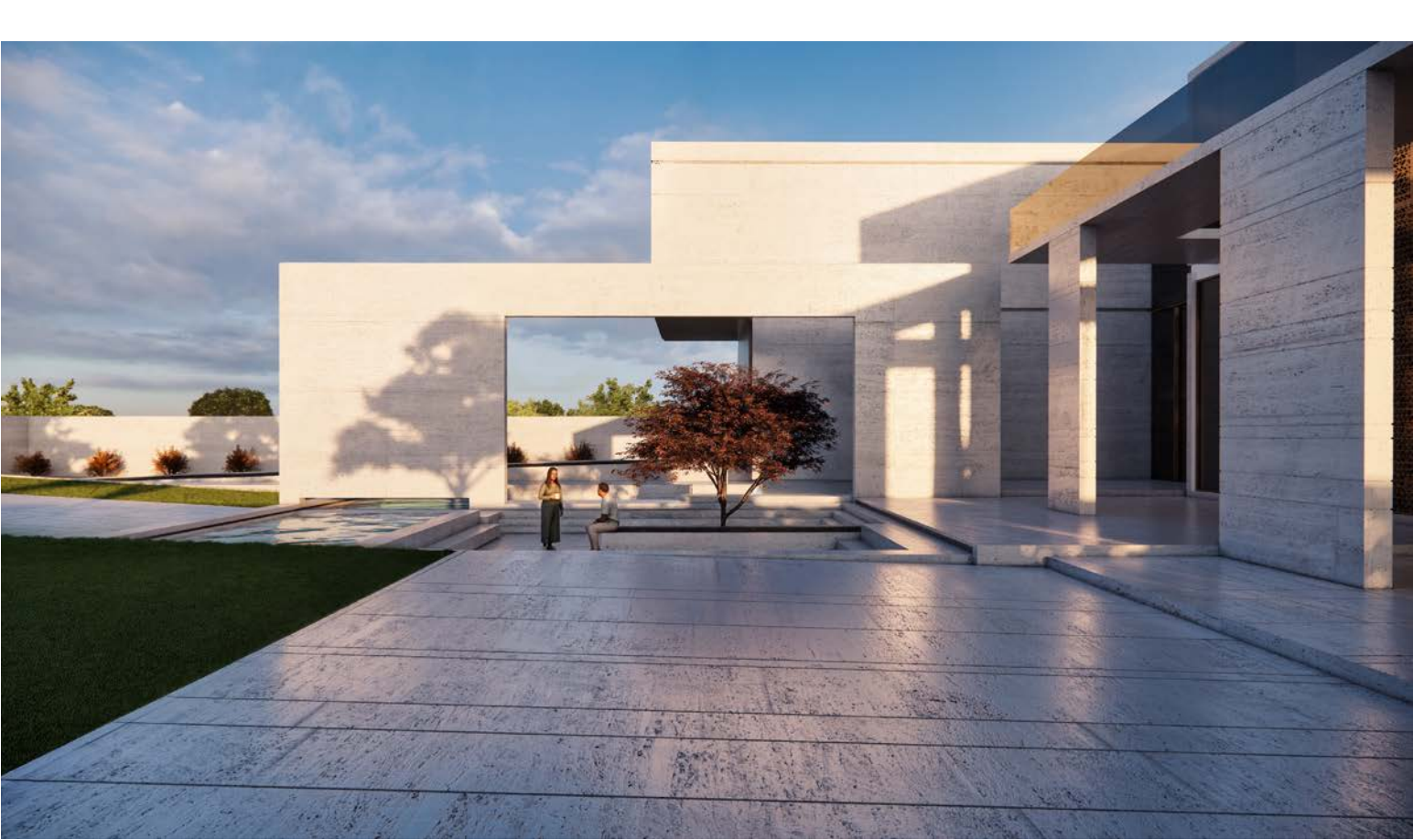




**FAWA HOUSE**  
Saudi Arabia - Ryhad

Private villa  
Design team leader role

Project for the construction of a single-family house on the outskirts of Riyadh. Positioned within a rectangular plot, the building consists of two levels. Two private gardens are located on the main front of the house and on the back inside which there is a large pool area with a solarium.





## FSC - VILLA

Palermo - Italy

Private villa

*Design team leader role*





## RESTORATION



### KHALIL BASHA MOSQUE

Libya - Tripoli



### A. B. M. QURANIC SCHOOL

Libya - Tripoli



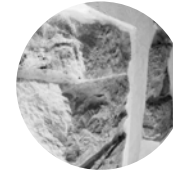
### ISLAMIC MUSEUM

Libya - Tripoli



### PALESTRA CAMPOSTRINO

Forlì - Italy



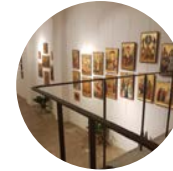
### STONE HOUSE

Palermo - Italy



### PLIFIERI CHAPEL

Palermo - Italy



### ICONE MUSEUM

Palermo - Italy



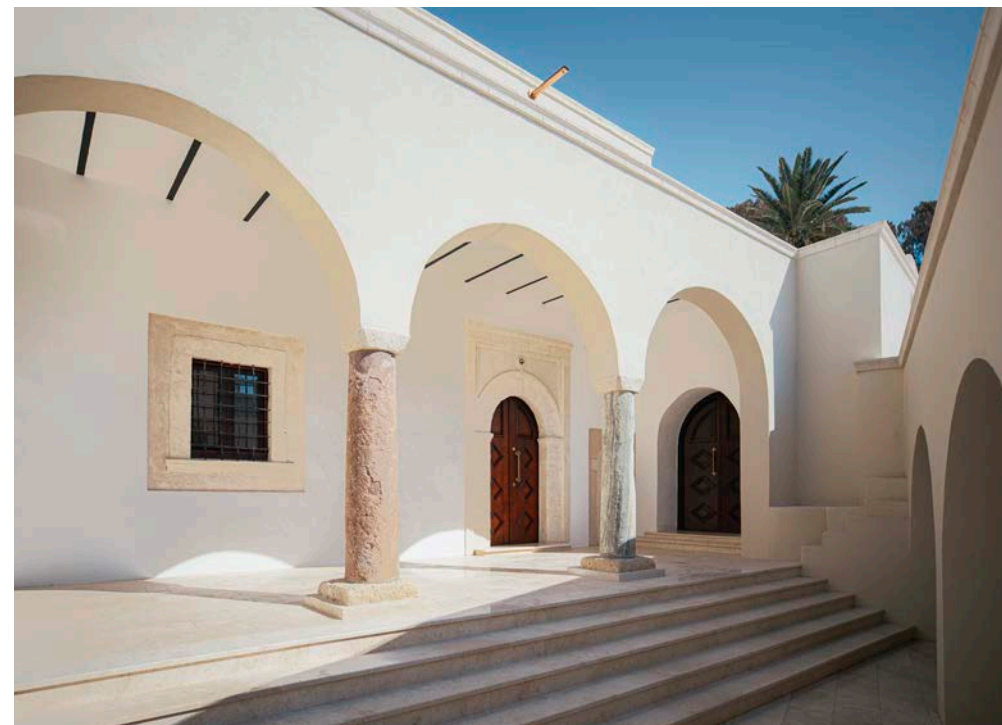


## KHALIL BASHA MOSQUE

Libya - Tripoli

Restoration of the Khalil Basha Mosque (XVIII cen)

*Project / Construction manager role*





## ANAS BIN MALEK QURANIC SCHOOL

Libya - Tripoli

Restoration and renovation of the Anas Bin Malek  
Couranic school

Project leader role

Construction manager role

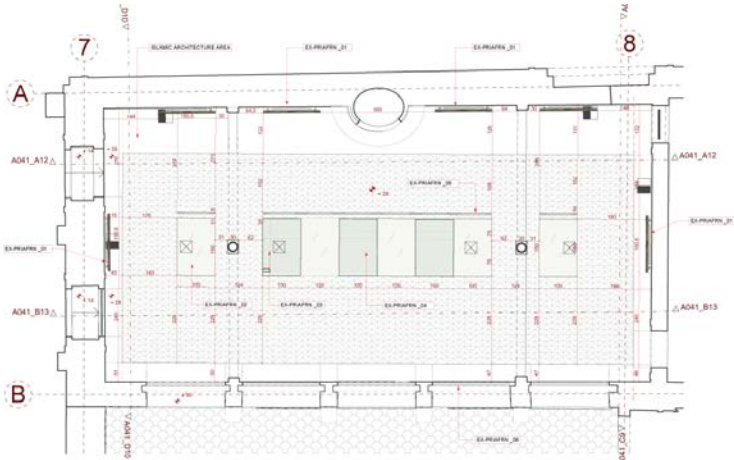




ISLAMIC MUSEUM

Libya - Tripoli

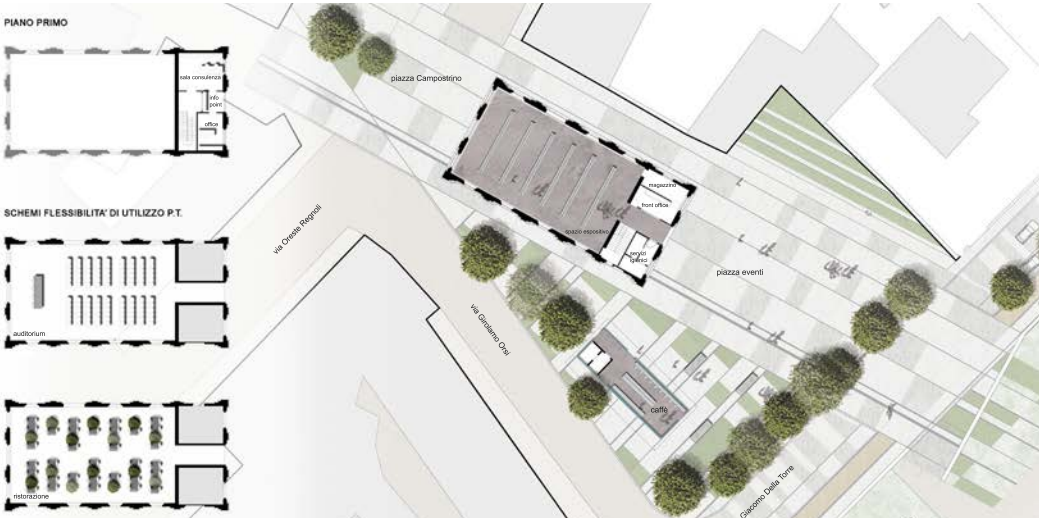
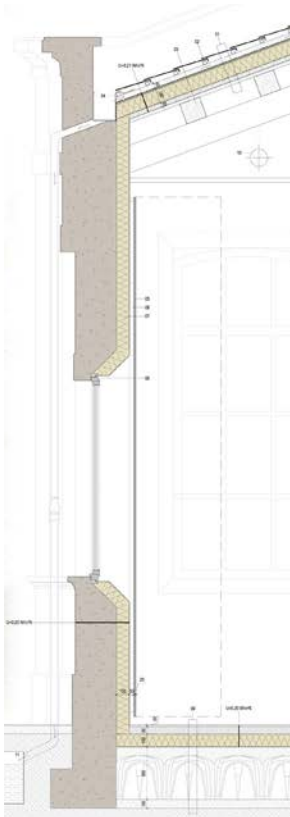
Restoration of historical building / Exhibition design  
Design team leader role



PALESTRA CAMPOSTRINO

Forlì - Italy

Restoration of historical building / Exterior areas design  
Project Architect role





**STONE HOUSE**

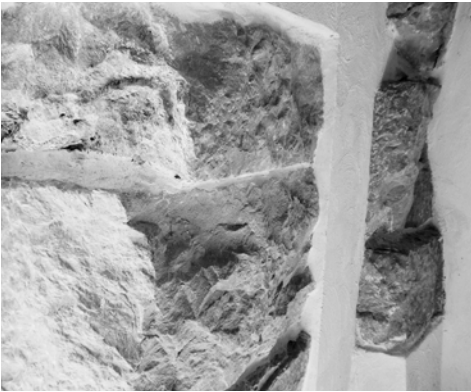
Palermo - Italy

Private house restoration / interior design

*Design team leader role*

*Restoration of a small space located in the historic center of Piana degli Albanesi.*

*After the works of structural consolidation, the goal of the interventions was to rediscover and highlight the material elements coming from the local building tradition.*





**PLIFTERI CHAPEL**  
Palermo - Italy

Private historical chapel restoration / Interior design  
*Design team leader role*



**ICONE MUSEUM**  
Palermo - Italy

Ancient building restoration / Exhibition and interior design  
*Design team leader role*

*"Like beauty, a treasure cannot remain hidden": this is the introduction to the "ICONE" event.  
The exhibition is housed in a space dating back to the XVII century completely restored in this regard.*





## INDUSTRIAL / RETAIL / PRODUCT DESIGN



**CCOMME**  
Udine - Italy



**PC HEADQUARTERS**  
Tomilin - Russian Federation



**SEGAFREDO COFFEE BAR**  
Treviso - Italy



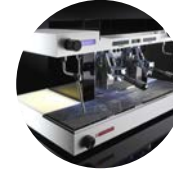
**NOKYAN TYRES**  
Bologna - Italy



**NEEDO MONOLITHE**  
Treviso - Italy

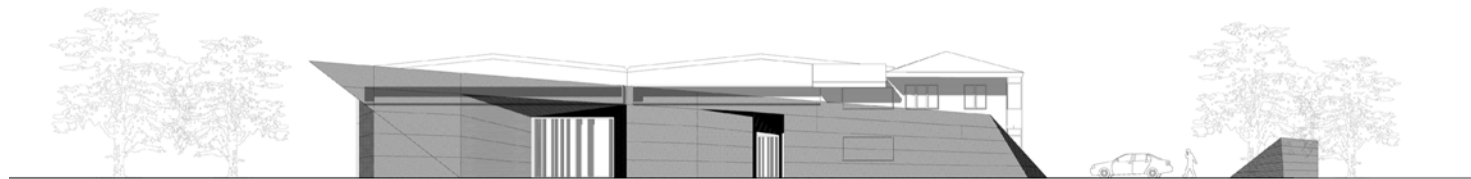


**NEEDO Line M - R**  
Treviso - Italy



**ROMA - SANREMO**  
Treviso - Italy

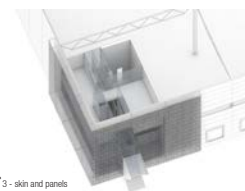
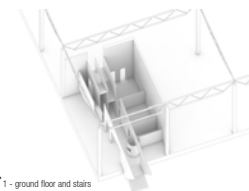




## PC HEADQUARTERS

Tomilin - Russian Federation

New façade / Headquarters Interior design  
Design team leader role



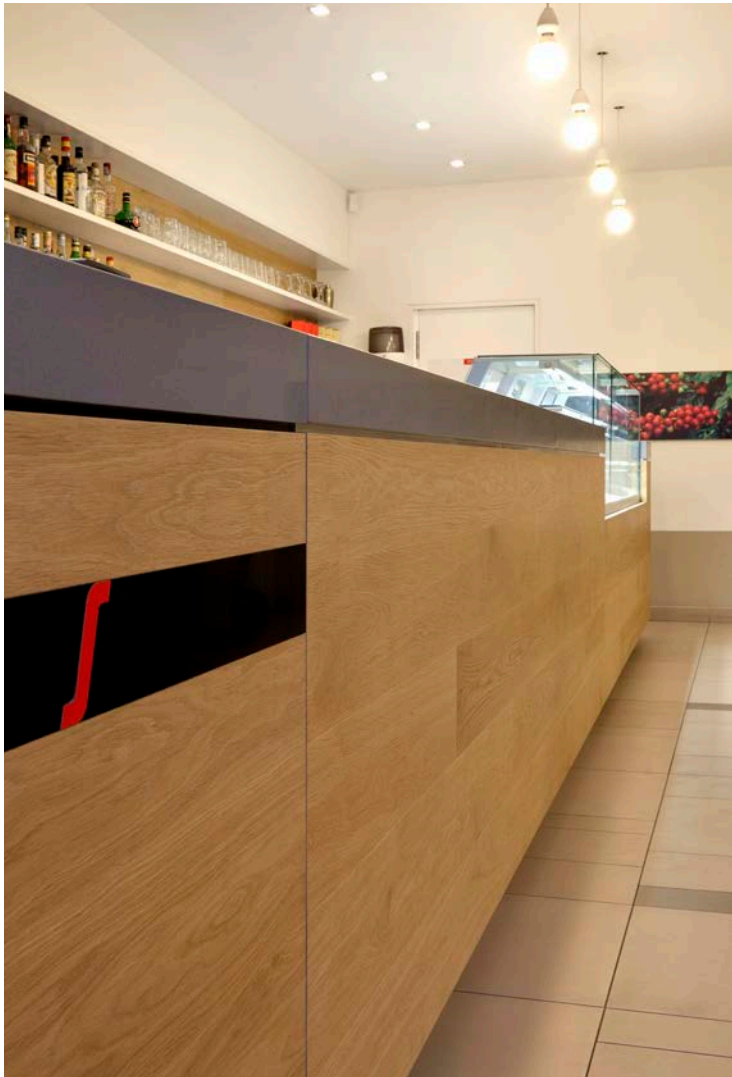
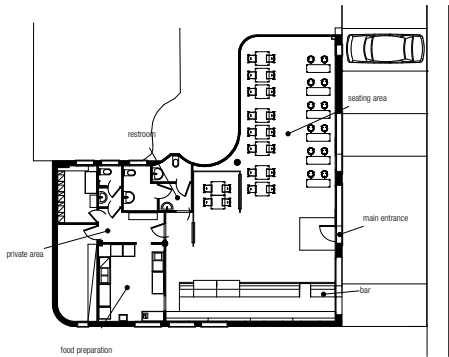


SEGAFREDO ZANETTI COFFEE BAR

Treviso - Italy

Interior design  
Design Architect role

Renovation of a commercial space in Treviso for the Segafredo Coffee Bar chain. Light and material are the founding elements of the concept that follows the guidelines of the famous leader in the production and distribution of products related to the world of coffee.





**NOKIAN TYRES**

Bologna - Italy

Exhibition stand design

Design Architect role

World fastest winter tyres

**nokian  
TYRES**





## NEEDO RADIATOR MONOLITHE

Treviso - Italy

Electric radiator design

Product designer role

*MONOLITHE by NEEEDO is a high-tech design radiator with two distinct functions within the same environment, heat and light.*

*It is an electric heating system with high thermal efficiency thanks to the ACS patent and at the same time it is lighting floor with low consumption LED technology.*

*The NEEEDO product is entirely made of 100% recyclable aluminum.*







## NEEDO RADIATORS Line M - R

Treviso - Italy

Electric radiator design

*Product designer role*





**SANREMO**  
**ROMA**



## **ROMA - SANREMO**

Treviso - Italy

Professional coffee machine design

*Product designer role*

*Roma TCS is one of the leading machines of Sanremo: the best technical and aesthetic characteristics are grouped in it. Excellent functionality, high technology and creative design are happily interpreted by this machine that gratifies the eye, anticipating the pleasure of the coffees delivered with the highest quality and in any condition of use.*





**THANKS FOR WATCHING**

PAOLO CARAMANNO ARCHITECT *EMAIL* [PAolocaramanno@gmail.com](mailto:PAolocaramanno@gmail.com) *PHONE* +39 347 0198213

